

January/February 2020

The **Perfins** Bulletin

Volume 74, Number 1 Whole Number 680

- Jay Street Connecting Railroad
- New Locations - Southern Pacific RR
- New Railroad use
- Perfined double impression Sc# 502
- Catalog updates
- Thanks Ken
- Auction #161
- Prices realized Auction #160

Changes to the Club's Leadership Team

Bob Hodges, elected Vice President at the Club's annual convention in Omaha, NE last August took office on January 1, 2020. Bob was informally introduced to the Club in the January/February 2018 Bulletin as a recent retiree who had enthusiastically offered to help the Club. It was also noted that he exhibits his perfins at a variety of shows, having won awards for several of them. (See "Congratulations!", pages 9-10 in the same issue for one example of his exhibiting skill.) In moving to the Vice Presidency, Bob left one year of his three year term as Director-at-Large vacant.

Cliff Irving has been named by President Steve Endicott to fill that remaining year as our third Director-at-Large. Director-at-Large. Cliff introduces himself as follows:

I am lucky enough to live on Cape Cod MA in the old town of East Sandwich. I am married to my wife Chris for 40 years and yes she is a stamp collector. We have three sons, four grandkids, and one cat. I am a self employed plumber for the last 36 years and have been working in the trade since I was 14. I am now 61 years young. I was a volunteer firefighter for 26 years and a boy scout leader for 15. When I am not working or hanging out in my stamp room with my stamp collections, you will find my wife and I out hiking in the mountains as we are long distance backpackers, hiking anywhere there is a trail to hike. My stamp interests are: anything Red Cross related (perfins, precancels, covers, world wide stamps) also

any items of the Red Cross Organization; Christmas related stamps of the USA (perfins, precancels, and covers); New England States precancels; and, 8¢ - 11¢ Statue of Liberty and Flag stamps of the USA (perfins and precancels).

I am looking forward to helping out The Perfins Club in any way I can since, as we all know, it is an awesome Stamp Club with a lot of GREAT members who have an endless wealth of knowledge about the Perfins world of stamps!!!

Mike Hynes returns for his second term as Director-at-Large, having been reelected to that position, unopposed, at last August's Club convention. Mike also acts as our Webmaster and gives us soe great exposure to anyone interested in learning about perfins.

Finally, after serving as our Sunshine Manager for quite a few years, Francis Stunzi has decided to retire as Sunshine Manager. Francis has collected perfins for 30+ years. He specializes in collecting perfins in the 1940 Defense series (Scott 899, 900 and 901), Prexies, the Victory stamp, and he has a very large general issue collection. We thank him for many years of service as Sunshine Manager and wish well in his future stamp collecting efforts.

Francis' retirement left the position of Sunshine Manager vacant, but --- see page 3...

**The *Perfins* Bulletin is the Official Journal of
The Perfins Club - Founded 1943
2019 Officers, Directors & Program Managers**

EXECUTIVE BOARD

PRESIDENT
Steve Endicott
20 Greensburgh Ln.
San Anselmo, CA 94960-1000
perfins@gmail.com
Term expires: 12/31/2020

VICE PRESIDENT
Bob Hodges
3066 Burkson Cove
Memphis, TN 38119-8920
901-351-3270
hodges193@comcast.net
Term expires: 12/31/2022

SECRETARY
John Hart
6500 Upper Applegate Rd.
Jacksonville, OR 97530-9314
541-899-2971
jg.hart@charter.net
Term expires: 12/31/2022

TREASURER
Dan Baugher
14618 Big Timber Lane
Chesterfield, MO 63017-5659
dbaugh@charter.net
Term expires: 12/31/2021

DIRECTORS-at-LARGE
Cliff P. Irving
P.O. Box 131
East Sandwich, MA 02537-0131
2hike@comcast.net
Term expires: 12/31/2020

David W. Smith
P.O. Box 64
Traumansburg, NY 14886-0064
precancel-smith@aol.com
Term expires: 12/31/2021

Mike Hynes
P. O. Box 581
Roseville, CA 95661
Mike@precancels.com
Term expires 12/31/2022

**IMMEDIATE PAST FULL-TERM
OFFICER**

Jerry Hejduk
P.O. Box 490450
Leesburg, FL 34749-0450
352-326-2117
flprepers@comcast.net
Term expires 12/31/2020

THE *PERFINS* BULLETIN EDITOR

Paul Mistretta
4148 Commodore Dr.
Atlanta, GA 30341
678-547-9344
paulmistretta70@gmail.com

ASSISTANT *BULLETIN* EDITOR

Joe Chinnici
joechin@tampabay.rr.com

PROGRAM MANAGERS

PUBLISHER

Susan Kolze
329 E. 1st St. #311
Dayton, OH 45402-1705
sckolze@gmail.com

AUCTION CHAIRMAN

Joe Coulbourne
1532 Lakeview Pkwy.
Locust Grove, VA 22508-5318
josephc427@aol.com

U.S. CATALOG CHAIRMAN

Steve Endicott
See president

FOREIGN CATALOG CHAIRMAN

Brian Freeman
PO Box 2222
Elk Grove, CA 95759-2222
brianj_freeman@yahoo.com

U.S. REVENUE CATALOG CHAIRMAN

Arthur J. Mongan
12432 Pretoria Drive
Silver Spring, MD 20904-1845
301-572-5459
revs.perfins@gmail.com
Assistant: Joe Coulbourne
josephc427@aol.com

CLUB LIBRARY

For assistance: Clark Buchi
eclark8@yahoo.com
615-790-7746
or contact directly:
American Philatelic Research Library
100 Match Factory Place
Bellefonte, PA 16823
814-933-3803
stamps.org/About-the-Library

PERFINS SALES MANAGER

Robert T. Combs
P.O. Box 220
Tome, NM 87060-0220
505-866-0949
stampmgr@hubwest.com

COVER SALES MANAGER

Robert Littrell
8150 Chipita Park Rd.
Cascade, CO 80809-1105
719-684-7986
Robert.littrell@comcast.net

PUBLICATION SALES MANAGER

Steve Sherman
652 Knollwood Dr.
Battle Creek, MI 49015-4610
Stevensherman652@att.net

SUNSHINE MANAGER

Karen Hebel
4106 Patterson Ave.
Oakland, CA 94619-1557
510-530-0877
karenhebel@sbcglobal.net

Parliamentarian: Paul Mistretta

Perfins Club membership is open to all persons interested in the collection and study of perforated initials and insignia in postage stamps. Yearly dues are \$15. Dues may be mailed to the Secretary listed above or by PayPal to perfin@charter.net. New members - partial fiscal year dues are waived. Full year dues are due by June 30 of each year. Annual dues include a subscription to *The Perfins Bulletin* mailed bulk rate printed matter; or 1st Class for an additional postage charge. Applications are available at www.perfins.org or from the Secretary listed above.

**Submit *Bulletin* articles, news, or advertisements to:
Paul Mistretta, 4148 Commodore Dr., Atlanta, GA 30341 or email to paulmistretta70@gmail.com**

The Perfins Bulletin is copyrighted by The Perfins Club Cited quotations are encouraged.
Permission for extensive use of information in the *Bulletin* may be obtained from the editor.

Visit The Perfins Club web site at <http://www.perfins.org> -- Mike Hynes, Webmaster (mike@precancels.com)

Leadership Changes (continued from page 1)

Karen Hebel, spouse of Tim Hebel, has agreed to be our new Sunshine Manager. Karen and Tim attend all the California precancel and perfin meetings and some of the National meetings. While both Tim and Karen have been very supportive of our Club and both are members of our Club, Tim is predominantly into precancels. Karen has a great sense of humor; she and Tim refer to her as a "Stamp Tolerator". Karen hangs out with the other ladies at our stamp shows; they often partake in extended wine tasting trips, food tours and shopping while we "toil" away

searching for stamps at our shows. Karen is a member of her church choir group, enjoys gardening, reading and traveling abroad. Karen enjoys throwing clay pottery.

Please let Karen know if you learn of a Club member, or one of their immediate family (spouse or children), in ill health, or who has passed away, so that a card can be sent on behalf of our Club.

Contact information for all four of these new team members is given on page 2 of this issue.

Three New Locations for the Southern Pacific

Bill Lesh (#3718)

[Ed. note: In the interest of space I have extracted cover strips from Bill's full cover illustrations]

The first new location for the use of Southern Pacific's pattern S215 is Watsonville, California. The cover was canceled Feb 23, 1915 and is franked

with a 2¢ res Panama-Pacific Exposition issue stamp.



And, two additional locations of use for SP's pattern these for pattern S216.

Below is a cover strip cancelled in San Jose, Calif. in March of 1957. San Jose is now in the heart of Silicon Valley, but in the 1950's it had a lot of fruit orchards.



And the third find is a cover I found at a yard sale (not bad...) It is cancelled Sacramento, California in March of 1947. Of interest in this cancel, beyond the

new city of use, is the "T.O.S.P. Depot" (Terminal Office Southern Pacific Depot) notation in the circular date stamp cancel.



Results of Auction #160

Lot #	Results	42	\$2.50	83	\$3.00	124	NS	165	\$4.00
1	\$3.00	Lot #	Results	84	\$1.00	125	\$6.00	166	\$10.50
2	\$7.50	43	\$6.00	Lot #	Results	126	NS	167	\$10.50
3	\$0.50	44	\$0.50	85	\$1.50	Lot #	Results	168	\$8.50
4	NS	45	NS	86	\$1.50	127	\$1.00	Lot #	Results
5	\$3.00	46	\$4.00	87	\$0.00	128	NS	169	\$8.50
6	NS	47	\$3.00	88	NS	129	\$5.50	170	\$8.50
7	\$1.50	48	NS	89	\$0.50	130	NS	171	\$21.00
8	NS	49	\$0.50	90	\$7.50	131	\$6.00	172	\$21.00
9	NS	50	\$0.50	91	\$3.00	132	\$2.00	173	\$15.50
10	\$3.00	51	\$3.00	92	NS	133	\$27.50	174	\$27.50
11	NS	52	\$8.50	93	NS	134	\$4.25	175	\$8.50
12	\$1.50	53	NS	94	NS	135	\$1.00	176	\$4.75
13	NS	54	\$2.25	95	\$3.00	136	\$1.75	177	\$9.00
14	NS	55	\$0.50	96	NS	137	\$5.50	178	\$21.00
15	NS	56	NS	97	\$1.50	138	\$5.50	179	\$16.00
16	NS	57	NS	98	NS	139	\$7.00	180	\$23.00
17	\$2.50	58	NS	99	\$3.00	140	NS	181	\$10.50
18	NS	59	NS	100	NS	141	NS	182	\$8.00
19	\$3.00	60	\$1.00	101	NS	142	NS	183	\$16.00
20	NS	61	NS	102	NS	143	NS	184	\$35.00
21	\$1.50	62	\$3.00	103	NS	144	NS	185	\$5.00
22	\$1.00	63	NS	104	\$1.50	145	NS	186	\$27.50
23	NS	64	NS	105	\$3.00	146	NS	187	NS
24	NS	65	\$3.00	106	NS	147	\$1.25	188	\$27.50
25	\$0.50	66	NS	107	NS	148	\$0.50	189	\$16.00
26	\$1.25	67	\$3.00	108	\$6.00	149	\$2.00	190	\$5.00
27	\$6.00	68	\$3.00	109	NS	150	\$5.50	191	\$1.50
28	\$6.00	69	\$3.00	110	NS	151	\$5.50	192	\$3.00
29	\$6.00	70	NS	111	\$1.50	152	\$5.50	193	\$2.25
30	NS	71	\$1.50	112	\$1.50	153	\$4.50	194	\$5.00
31	\$7.50	72	\$1.50	113	\$0.50	154	\$4.50	195	\$2.00
32	\$15.00	73	\$3.00	114	\$1.00	155	\$4.25	196	\$0.00
33	\$1.00	74	\$42.50	115	NS	156	\$4.25	197	\$16.00
34	\$0.50	75	\$4.25	116	NS	157	\$4.25	198	\$1.75
35	NS	76	\$6.00	117	NS	158	\$4.75	199	\$1.75
36	NS	77	\$3.00	118	NS	159	\$4.25	200	\$2.25
37	NS	78	\$3.00	119	\$3.00	160	\$3.75	201	\$1.75
38	NS	79	\$1.50	120	\$1.00	161	\$10.50	202	\$1.00
39	\$3.00	80	\$0.50	121	\$1.00	162	\$4.00	203	\$1.00
40	NS	81	\$8.00	122	\$8.50	163	\$4.25	Total	\$815.75
41	NS	82	\$6.00	123	\$1.00	164	\$4.00		NS = No Sale

Ken Masters – Thank You!

Steve Endicott (LM# 2284)

Ken's life journey has now taken him on a path away from philately with new, exciting interests. You may not be aware of the many important endeavors Ken has been involved with in helping our Club over the years. I would like to take a few moments to acknowledge his contributions to The Perfins Club.

In August 2009 Ken agreed to take on the effort of being the Editor for our *Bulletin* from Paul Mistretta. Ken served as Editor for six years. During this period and 36 issues, he enhanced the journal – adding color illustrations. Under his Editorship the *Bulletin* was awarded the American Philatelic Society (APS) Vermeil medal for excellence at three APS World Series of Philately shows in 2012.

While Editor, Ken also served as Publisher and worked with the printer during the production of each issue. Many significant details needed to be addressed for each issue, including putting the copies for those members who receive it by First Class mail or live outside the U.S. in envelopes, affixing postage and mailing those envelopes, mailing the copies that are distributed by Periodicals mail, handling the distribution to members who receive multiple copies, handling specific matters regarding distribution to “comp” recipients such as philatelic libraries, etc. Initially, these duties were split between the printer and Ken. However, when we started using color in the *Bulletin*, it was beyond the capabilities of that printer. A new printer was found. Ken then assumed the duties of the Publisher and handled ALL aspects of our *Bulletin*, from writing, editing and producing each issue, and, then managing the entire distribution process.

In March 2015, Clark Buchi and then in November 2017 Paul Mistretta (again) became the *Bulletin's* Editor, but Ken continued as Publisher until the previous issue when Susan

Kolze became Publisher. Over the past year and with the printer's enhanced mailing capabilities, most of the postage and distribution tasks were transferred to the printer.

From January 2017 through December 2019, Ken served as Vice-President of our Club and contributed many good ideas and clarifications of Club processes for the Executive Board – more than I can list here. For several years Ken served as our Club representative to the APS and also to the American Topical Association. In this role, Ken has traveled to several shows and manned a booth promoting our Club and perfins.

Ken drove from Kansas City to San Diego in the Summer of 2017 to assist me for two long, hot days in organizing, cataloging and boxing the entire Club library. We took all the boxes to the post office in his SUV for mailing to the American Philatelic Research Library. On his way home, Ken delivered some duplicate library materials to the Rocky Mountain Philatelic Library.

I was fortunate to have about a dozen members assist me as proofreaders and research assistants during various times in the process of developing the new *Catalog of United States Perfins*. Ken was one of those proofreaders and helped me throughout the long process, making suggestions and noting necessary corrections for each section of the *Catalog* as it was developed. He also helped me with the illustrations. His excellent suggestions were greatly appreciated. The final *Catalog* product is a much improved document because of Ken's contributions.

Ken is a life member of The Perfins Club and will remain a member and a valued friend; we wish him the very best. Thank you, Ken, for your many years of service to The Perfins Club.

Help Please!

I have exhausted the supply of mid-length to long articles for the *Bulletin* (though I do have quite a few short notes available. Please get out your word processors, pens, pencils or even crayons and become an author!

U. S. Catalog Notes

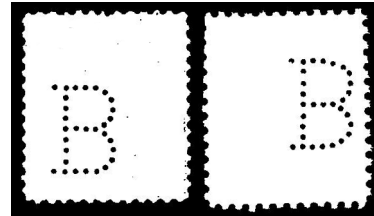
Steve Endicott (LM# 2284)

Perfins B003 and B003A

These two common perfins can be difficult for us to distinguish. Perfin B003 has flat, horizontal lines at the top and bottom of the letter 'B', whereas perfin B003A has curved lines sloping inward. Over the years, our Catalogs have listed perfin B003 as being used from 1908 to 1954 and have listed perfin B003A as being used from 1908 to 1965. These dates, listed in historical catalogs, are open to further research.

While sorting several hundred copies of these two perfins, I have noticed that B003 is seen in earlier stamp issues, whereas perfin B003A is seen in more recent issues. The break is the 1926 4th Bureau definitive series.

One example of each is shown nearby. B003 is shown in a 1908 one cent stamp [Sc# 331, single line watermark], B003A is shown in a 1954 Lincoln stamp [Sc# 1036, dry printing].



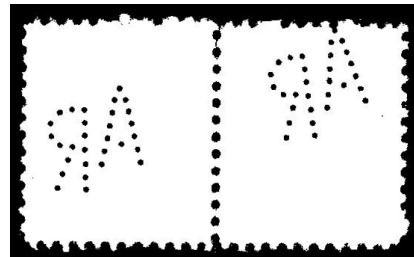
In a future A&C edition, I will modify these stamp issue usage dates for these two perfins as follows:

B003 - 1908 to 1926
B003A - 1926 to 1965

Perfins A221-01A and A221-01B

Both of these patterns were used by the American Radiator's Detroit, MI branch and are very similar. These patterns have now been found se-tenant in two different se-tenant pairs in the 1926 definitive Series.

Pattern A221-01B will be deleted and the supporting data for both will be consolidated under A221-01A.



A221-01B A221-01A

Perfin W072-01 and W072-01B

Perfins W072-01 (rating F) and W072-01B (rating D+) are very similar. The historical supposed distinguishing characteristic is the precancel of Chicago vs. that of New York City. It has also been claimed that the outside legs of the letter W differ. Dave Smith and I have studied many of these; between us, we have nearly 1000 copies (fewer with precancels). We have found both precancels on both perfin patterns. We have found perfins with precancels and some with post cancels where the outside legs of the letter W are

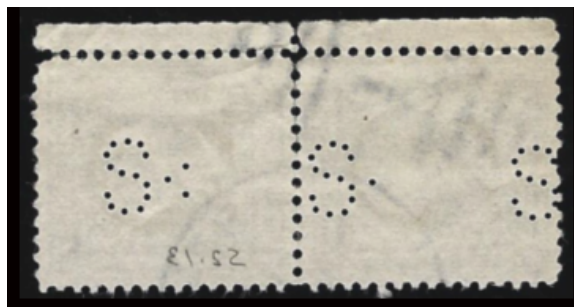
straight, where one of the legs curves inward, or where one of the legs curves outward. We have concluded that perfin W072-01B should be deleted.

Updated Catalog information for perfin W072-01 will include the "y" code for "variations known", will include a precancel notation for Chicago, and will maintain the rating of F. A supplemental note will be added that the perfin has also been seen with a New York City precancel.

Patterns S002-55 and S002-62a

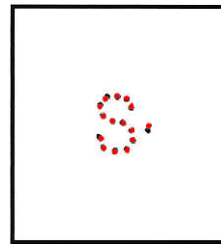
The illustrated se-tenant pair of 10c Mark Twain Famous Americans stamps raises several unresolved questions. We'll begin with the basic problem.

The illustrations below (front and back views of this pair) show the dilemma. The stamps show no dimples or chads and the patterns are punched in a row with bases aligned and spaced to punch a sheet of regular issue stamps. Does anyone out there have other se-tenants or strips showing these two patterns side by side, which would confirm that S262a (lacking the #4 and #10 remote holes) is either a broken pin variety or a modified S002-55? And if you have se-tenant copies with both these patterns and they are cancelled - from where? While I have several other questions to resolve regarding these patterns, additional confirmed se-tenant items will reduce my confusion slightly.



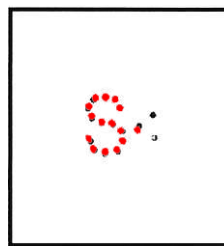
As an added bit of confusion we must consider that there also is a pattern S002-62, with the same format as S002-62A.

A comparison of these two patterns suggests that the position of the position of three pins is different between the two patterns as shown in the following illustration.

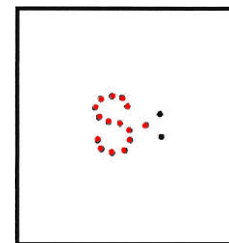


S002-62A (red) over S002-62 (black)

Comparing both S002-62 and S002-62A to S002-55, however, shows a very interesting surprise.



S002-062 (red)
over S0062-55 (black)



S002- 062A (red)
over S002-55 (black)

It is apparent in the above two illustrations that S002-62A diverges from S002-55 in the same positions as it did from S002-62 while S002-62A is an essentially perfect match for S002-55 except for the absent holes.

As noted at the outset no decision has been made concerning this disposition of pattern S002-62A, but the evidence is piling up against retention as a separate pattern. More about this one later.

V022.5 -- Definitely a Two-Perforator Pattern

And for those who still question if V022.5 is the product of two perforators rather than a single perforator with poorly aligned multiple dies, here's an eye opener! The "P" is normally seen somewhere between the arms of the "V", (see also deleted patterns V0222.6-.8 in the current US catalog). This item absolutely confirms creation by two perforators.



Perfins Literature at the APRL (Part 2)

Continued from the November/December 2019 issue of the *Bulletin*

Catalogs (cont.)

Denmark

[Englebrecht, Peter, ed.] c1983. Handbog over Danske firmaperforeringer. 2. afsnit - katalog = Handbook on Danish perfins. 2. Section.

Hansen, Ostergaard. [n.d.] Danske perforeringer.

Hansen, Poul Elman; Krolak, Jan; Møller, John; Fauerso, Per. 2001. Prisliste 2001, katalog over danske firmaperforeringer.

Van Lint, Margaret; Van Lint, Victor J.; Enschede, E.J. 1956. List of Danish Perfins.

Egypt

Varjabedian, Vahe. 1999. Perfins on Egyptian stamps.

Finland

Peltonen Ky, Lauri. 1999. Suomi, Ahvenanmaa postimerkkiluettelo 1856-1999 = Finland, Åland frimarkskatalog 1984-1999.

France

Couve, Michel. 2012. Les piquages semi-privés des chiffres-taxe carres de France.

Dedecker, R. 1990. Timbres perfores France et Colonies (2. ed.)

Dedecker, R. 1993. Timbres perfores France et Colonies (2. ed. Suppl.)

Dedecker, R.; Dumas, Olivier. 2014. Timbres perfores de France (4ème édition).

Dedecker, R.; Herbert, M.; Tschaen, E.; Leger, G. [2006?] Timbres perforés des pays d'expression française & Alsace-Lorraine (Troisième édition).

Lebland, Georges. [1964.] Etude no 67. Emissions de France. Vol. II, Les timbres français perfores (première liste).

Lebland, Georges. [1968?]. Etude no 97. Emissions de France. Vol. III, Les timbres français perfores (deuxième, troisième et quatrième listes) /

Lebland, Georges. 1975. Etude no. 185. Emissions de France, Vol. III, Les timbres français perfores (dixième et onzième listes).

Lebland, Georges. 1978. Etude no. 226. Emissions de France. Vol. IX, Les timbres perfores français.

Various. [Clip file, France]

General

Gersch, Sylvia M. 1995. Guide to perfin exhibiting.

Jennings, Charles. [1966.] The introduction of punctured endorsements /

Maxa, Vojtech. 1984. Katalog perfinu Balkanskych zemi.

Nussbickel, John J. [1989.] Perfins on stamps of the Austrian Levant 1877-1915, Turkey & Crete.

Tilles, Harvey G. c1975. Perfins of the Middle East: Egypt, Palestine, Sudan, Lebanon, Persia, Turkey.

Germany

Bund Deutscher Philatelisten e.V. Arbeitsgemeinschaft Lochungen. 1985. Katalog der deutschen Firmenlochungen.

Bund Deutscher Philatelisten e.V. Arbeitsgemeinschaft Lochungen. 2010. Catalog of German perfins (2. Ed.)

Neefus, John D. c1991. A specialized album for stamps of The German Plebiscites. Volume 1B. Perfins.

Great Britain

-
- Bowman, R J M. 1976. Railway perfins of Great Britain.
Coles, John. n.d. Design, trade mark & monogram perfins.
Coles, John. n.d. Shipping perfins.
Current, Tom. 1991. The GB officials.
Edwards, T.A.; Lucas, B.C. [1986?-1990]. A catalogue of Great Britain.
Gault, Roy. 2016. The Perfin Society's New illustrated catalogue of Great British perfins. Decimal Machin list for all sections.
Gault, Roy. 2016. The Perfin Society's New illustrated catalogue of Great British perfins. Section J - Details (2nd ed.)
Gault, Roy. 2016. The Perfin Society's New illustrated catalogue of Great British perfins. Updates for all sections - Details.
G.B. Perfin Study Group. [n.d.] G.B. Perfin Study Group Library list.
Jennings, Charles. The history of British security stamps (overprinted and perforated).
McKee, Robert. c1975. The perfins of Great Britain, a catalog-album.
Nelson, John Stanley. c1967. The handbook of British perfins.
Nelson, John Stanley. 1983. The handbook of British perfins (2nd ed.)
Nowicki, W.Z.J. c1987. Polish perfins in G. Britain.
Nowicki, W.Z.J. 1987. The handbook of Polish perfins in G. Britain 1980-85.
Perfin Society (Great Britain). 2000. The Perfin Society Library index.
Perfin Society (Great Britain). 2004. The Perfin Society Library index.
Thornton, Mary E. 1964-1972. Catalogue of official perfins.
Thornton, Mary E. c.1967. Catalogue of official perfins. Section 1. Great Britain.
Thornton, Mary E. 1968. British stamps punctured for use by Department of the High Commissioner, London.
Tilles, Harvey G. 1976. Perfins of Great Britain. Vallancey, F. Hugh. 1948. British stamps perforated with firm's initials (S.P.I.F.S.) (2nd ed.).
Tomkins, Basil; Edwards, Tony. 1985. The Tomkins catalogue of identified G.B. perfins [photocopy] ([6th ed.])
Tomkins, Basil; Gault, Roy. c2004. The "Tomkins" catalogue of identified G.B. perfins [photocopy] (10th ed.).
Van Lint, Victor J. 1995. Catalogue of illustrations of British perfins.

Hong Kong

- Moo, Chuck Q. 1996. Moo's Hong Kong treaty ports, firm chops, perfins and postage cancels stamps catalogue (1841-1938) (1st ed.) /
Tilles, Harvey G. [1976?] The perfins of Hong Kong.
Tsang, Ming W. c2994. Hong Kong security markings.

Hungary

- Arbeitsgemeinschaft Ungarn e.V. im Bund Deutscher Philatelisten e.V. 1989. Katalog der ungarischen Firmen- und Behördenlochungen.
Ettre, Leslie S. 1971. Hungarian stamps with official punching; Hungarian stamps with official punching, some corrected data; Regarding the Hungarian stamps with three-hole punching.
Lente, István. 2007. Hungarian perfins = A Magyar Perfinek Katalógusa: céglyukasztások magyar bélyegeke.
Maxa, Vojtech. [1973]. The perfins of Hungary.
Maxa, Vojtech. [1976.] Catalogue of the perfins of Hungary.
Maxa, Vojtech. [1976?] Perfins of Hungary ([Preliminary ed.]).

Ireland

- Mewhinney, Richard L. c1994. Ireland, catalog of perfins (2d ed.)

India & Indian States

Werner, Magnus. c1990. The perfins of India and Indian States.

Werner, Magnus. 1994. The perfins of India and Indian States. Supplement [#1].

Werner, Magnus. 1998. The perfins of India and Indian States. Supplement [no.2].

Italy

Bertazzoli, Enrico. 2005. Perfin italiani : catalogo : repertorio delle perforature commerciali di francobolli dell'area italiana. Aggiornameto 2005 = Italian perfins : catalogue : list of trade perforations on stamps of the Italian area. Update.

Bertazzoli, Enrico. 2009. Perfin italiani : catalogo delle perforazioni commerciali de francobolli dell'area italiano, con valutazioni = Italian perfins : catalogue of trade perforations on stamps of the Italian area, with evaluations (2e ed.)

Cerruto, Giorgio. 1988. I "perfin" d'Italia (Edi.1988).

Hammink, Ruud J. 1995. Perfins of Italy

Japan

Adachi, Sunao. [1972.] Japanese perfins.

Adachi, Sunao. 1972. Nihon kigoiri kitte zukan.

Adachi, Sunao. 1974. Nihon kigoiri kitte zukan ([2nd ed.]).

Adachi, Tadashi. [1950]. Indispensable possession pierced stamps (2nd volume [Second edition])

Malaya

Giffen, P. 1989. Perfins (stamps with perforated initials) of British Malaya.

Malaysia

Lavender, Mervyn. 2002. (Perfins of Malaysia (Second ed.)

Nederlandse Antillen

See... Curaçao

Nederlandsch Indië

Enschedé, E.J. 1967. List of the perfins of Nederland, Curaçao-Nederlandse Antillen and Nederlandsch Indië (2nd ed.)

Enschedé, E.J. 1976.cList of the perfins of the Netherlands, Curaçao, the Netherlands Antilles, the Netherlands Indies (3rd ed.)

Netherlands

Bauder, Burton E. 1974. POKO issues of the Netherlands.

Bauder, Burton E. 1975. POKO issues of the Netherlands (Rev. ed.).

Enschedé, E.J. 1967. List of the perfins of Nederland, Curaçao-Nederlandse Antillen and Nederlandsch Indië (2nd ed.)

Enschedé, E.J. 1976.cList of the perfins of the Netherlands, Curaçao, the Netherlands Antilles, the Netherlands Indies (3rd ed.)

Hammink, Ruud J. 1993. De geschiedenis van de POKO postzegelplakmachine.

Verhoeven, Jan L. c1991. Catalogus van de perfins van Nederland en Og.

New Zealand

Franks, Laurie. [1970.] The Tasman catalogue of New Zealand "perfins" (stamps with perforated initials).

Samuel, R.D. n.d. New Zealand perfins.

Samuel, R.D. 1968. New Zealand stamps with perforated initials.

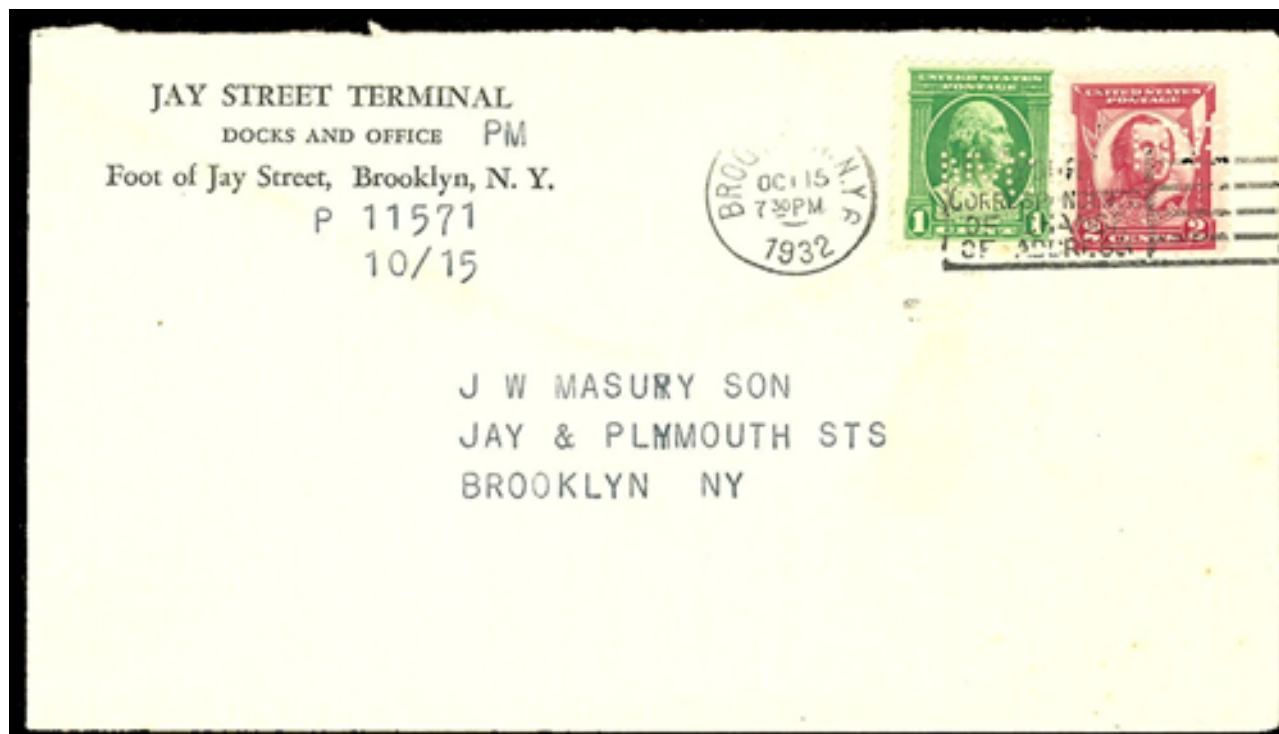
(to be continued)

A Curious Cover

Mike Sterrett (#3888)

I saw the cover pictured nearby offered on eBay. The auction described the cover as a “1932 New York cover with perfin stamps NYC and PRR”. The photograph of the cover showed a clear circular cancellation from Brooklyn, NY dated October 15, 1932. In 1932, the New York Central Railroad (NYC) and the Pennsylvania

Railroad (PRR) were fierce competitors. Being a railroad perfin collector, I wondered what they could have had in common that would have caused their perforated postage stamps to be used together on a cover? I decided to bid on the lot and ended up winning it.



Upon examining the cover, I found that the perfin patterns were N182 in a Scott #705 and P196 in a Scott #690. The return address on the cover is Jay Street Terminal. A Goggle search on the Internet gave several websites to explore. One website in particular, by Philip M. Goldstein, was extremely well researched and presented. In reading it, I discovered that Arbuckle Brothers, founded by brothers John and Charles, opened a coffee importing and processing facility in New York City in 1871. Their coffee brand name was “Ariosa”; later they added another brand name, “Yuban”. On February 5, 1906 the Arbuckle brothers organized the Jay Street Terminal and the Jay Street Connecting Railroad. The Jay Street Extension Railroad Corporation was incorporated on January 8, 1916 and the two

railroads were then consolidated as the Jay Street Connecting Railroad on April 3, 1916 with the Jay Street Terminal as the parent corporation.

The Jay Street Connecting Railroad was a peculiar railroad. The entire railroad was less than a half of a mile long and was not connected by rail to any other railroad. Rail traffic was exchanged with other railroads solely by railcar barges known as carfloats. A carfloat with boxcars on it can be seen in the lower right of the postcard of the Jay Street Terminal pictured nearby. The Jay Street Connecting Railroad served the Jay Street Terminal and several other customers, such as the addressee on the cover, J. W. Masury, that occupied warehouses on or adjacent to Jay Street Terminal property.



We now have some knowledge about the Jay Jay Street Terminal and Street Connecting Railroad. But, why the usage of the perfinned postage stamps from the New York Central and Pennsylvania railroads? None of the websites that I researched referenced a relationship between the NYC, PRR and the Jay Street Terminal, so I contacted Phillip M. Goldstein to see if he was aware of any relationship between the three railroads. He quickly replied and offered that he was not aware of any ownership or partnerships existing between the three, they apparently had a typical railroad relationship exchanging freight cars via the carfloats. Mr. Goldstein did, however, offer some additional insight to consider. The cover is dated 1932, the height of the Great Depression. He suggested that perhaps the NYC and PRR railroads had both made payment to the Jay Street Terminal for services rendered using postage stamps in lieu of currency.

Back to the internet I went to see if this was a common practice and to see if there was a rational reason for doing so. Dr. Sol Taylor states on his website, "In the early years of what became known as The Great Depression, the three United States Mints cut their operations dramatically". I looked up the mintage records in *A Guide Book of United States Coins* by R. S. Yeoman and found that the United States Mints combined to produce 221,801,000 pennies in 1930 but only 24,742,000 in 1931 and 19,562,000 in 1932, a reduction of

approximately 90% each year from the 1930 production. On another website, Bruce Champ, a contributing author and former employee of the Federal Reserve Bank of Cleveland, states, "Throughout the history of our country, there have been many times where shortages of cash were so severe they made life difficult for a lot of people - and hindered the smooth operation of the economy." He goes on to state, "More script (substitute currency) was issued during the Great Depression in the 1930's than ever before (or since)."

Without the ability to interview the individual that prepared this cover for mailing we may never know the exact reason of why perfinned postage stamps from the NYC and PRR came to be used together by the Jay Street Terminal. However, the hypothesis offered by Phillip M. Goldstein seems to be plausible. With low denomination coinage in short supply, railroads may have resorted to making payments of small sums through the use of postage stamps which could then either continue to be used as currency or as their intended use, to prepay the cost of mailing a letter. The unusual use of postage on this cover is not only of philatelic interest, but also of historical interest. It crosses the spectrums of U. S. postage, railroads, coffee beans, coin minting, and the Great Depression possibly exemplifying how companies found ways to continue to conduct business during difficult economic times.

I am very thankful for the information shared by the various website authors and especially Phillip M. Goldstein who was kind enough to take the time to communicate and offer additional ideas beyond what I found on his website. One more question does come to mind after looking into this cover. I doubt that this cover is unique. Is any other collector in possession of a similar cover sent from or to the Jay Street Terminal using perfined postage stamps? If so, I would be interested in seeing a scan of it. I can be contacted at msterrett@ifp1.com.

1. Goldstein, Philip M. 2019. Jay Street Terminal, Jay Street Extension Railroad & Jay Street Connecting Railroad. TrainWeb website. Accessed at: <http://members.trainweb.com/bedt/Indloco/jst.html>

2. Taylor, Dr. Sol. 2007. The Years the Mint Slowed Down. Accessed at: <https://csvhistory.com/scvhistory/signal/coins/soltaylor080407.htm>
3. Champ, Bruce. 2008. Stamp Scrip: Money People Paid to Use. Federal Reserve Bank of Cleveland website. Accessed at: <https://www.clevelandfed.org/en/newsroom-and-events/publications/economic-commentary/economic-commentary-archives/2008-economic-commentaries/ec-20080401-stamp-scrip-money-people-paid-to-use.aspx>

Auction # 161

Closes: midnight Feb 29, 2020

Guidelines: A minimum bid is specified for each lot. Lots will be sold to the highest bidder at the following advances over the next highest bidder:

- Up to \$5 - a \$0.25 advance;
- \$5.01-\$15 - a \$0.50 advance;
- \$15.01-\$25 - a \$1.00 advance;
- \$25.01-\$50 - a \$2.50 advance;
- \$50.01 + - \$5.00 advance.

No "Buy" bids; "or" bids are ok. In case of tie bids, the earlier postmark or e-mail wins. All single perfins are complete and in good condition, unless otherwise noted.

Bid by Lot #.

I will confirm all email bids via email.

Straight edges are identified but not considered to

be defects. In larger lots, you should expect some faults.

Lots will be sold to the winning bidder at the Minimum Bid or one increment over the 2nd highest bidder.

I have done my best to identify the Scott catalog number of each perfin. All individual perfins are returnable - mixtures are not returnable. I will send an invoice detailing your wins or losses.

Payments to the Perfins Club Treasurer. Once payment is received I will dispatch lots. Winnings totaling more than \$100 will be sent priority mail, otherwise it will be first class mail.

Please put your address on your bid sheet as this makes it easier for me to notify you after the close of the auction.

Send all bids to: Joe Coulbourne, 1532 Lakeview Pkwy. Locust Grove, VA 22508-5318

Email: josephc427@aol.com

Abbreviations used:

cc(s) = creased corner(s)
cl* = clipped corner @ *

cp = clipped or cut perf @ *
cr(s) = crease(s)

?h ? (count) of missing holes
hc = heavy cancel

nse* = natural straight edge @ *
 pf* = unspecified perforation faults @ *
 pp* = pulled perfs @ *
 pt* = pattern touches perfs *
 sc = scrape on vignette

sl = split
 sp(s) = short or shaved perf(s)
 th(s)* = =thin(s)*
 tr = tear
 Several abbreviations are sometimes modified by a position

indicator (“**”) as follows: t(↑), r(→), b=(↓), l=(←)
 “-c” when used indicates that the condition noted affects a corner of the stamp

Scott #s are used; pattern #s are from most recent catalogues when available.

United States Perfins				
Lot #	Cat #	Rate	Description	Min Bid
1	A099	E	SC #QE4; ptt	\$0.50
2	A169	C	SC #425	\$1.00
3	B116-5	C	SC #634; Preper Newark NJ 634-42	\$1.00
4	B116-36	C+	SC #814	\$3.00
5	B123	C	SC #504; ptt	\$0.50
6	B164	C	SC #332; cr, pp	\$0.50
7	B167	C	SC #332	\$1.00
8	B167	C	SC #367	\$1.00
9	B170	C+	SC #332; pf, cc wmk invtd (U)	\$1.50
10	B223.5	C+	SC #463	\$3.00
11	C054	C+	SC #375; cpl; pf; ptr	\$1.50
12	C093	C	SC #642	\$1.00
13	C097	B	SC #499; sc, ptr, nset	\$3.00
14	C098	C+	SC #508; pf	\$1.50
15	C105	C+	SC #463	\$3.00
16	C234	D+	SC #806	\$0.50
17	CP251.7I	D	SC #1265	\$0.50
18	C261	C	SC #807	\$1.00
19	C264	E	SC #565	\$0.50
20	C269	C	SC #807	\$1.00
21	C281	C+	SC #405; nset, ptr	\$1.50
22	C324	C+	SC #405; 5h; partial 2nd strike	\$1.50
23	C335	C+	SC #785; cpt	\$1.50
24	D33.5	B	SC #425; nset	\$6.00
25	D93	B	SC #503; cr; hc	\$3.00
26	D118	B	SC #336	\$6.00
27	E15.5	B+	SC #465; pf	\$6.00
28	E47A	C+	SC #406	\$3.00
29	E47A	C+	SC #464; nser; th, 1h	\$1.50
30	E51	C+	SC #527	\$3.00
31	E55	C+	SC #332; ptr	\$1.50
32	E62	C+	SC #527; cr	\$1.50

United States Perfins				
Lot #	Cat #	Rate	Description	Min Bid
33	E71	C+	SC #463	\$3.00
34	E72	B	SC #375; cp	\$3.00
35	E75	B	SC #375	\$6.00
36	E84	B	SC #332	\$6.00
37	E131	C+	SC #501	\$3.00
38	F37	C+	SC #406; nser	\$3.00
39	F46	B	SC #331; tht	\$3.00
40	F57.3	C+	SC #499	\$3.00
41	F70	C+	SC #406; 1h	\$1.50
42	F81	C+	SC #527	\$3.00
43	F92	C+	SC #332	\$3.00
44	F103	C+	SC #425; ptb	\$1.50
45	F135	C+	SC #334	\$3.00
46	F147	D	SC #372; ptb	\$0.50
47	F176	C	SC #720	\$1.00
48	F193	C+	SC #503	\$3.00
49	F210	C	SC #640; sps	\$0.50
50	F211	C+	SC #332	\$3.00
51	F213	C+	SC #405	\$3.00
52	F214	C+	SC #375	\$3.00
53	F226	C	SC #406	\$1.00
54	F230	B	SC #406; sl, 2h	\$3.00
55	G2	C+	SC #424; pf	\$1.50
56	G3	C+	SC #406	\$3.00
57	G7	C+	SC #332; left most hole just in perfs	\$1.50
58	G27	C+	SC #377; 1h	\$1.50
59	G40	B	SC #406; tr, pf	\$3.00
60	G53	C+	SC #375; sc, pf	\$1.50
61	G53	C+	SC #406; 6h	\$1.50
62	GP075.5I	C	SC #2225	\$1.00
63	G83	C+	SC #425; 2h	\$1.50
64	G86	C+	SC #720; ptf	\$1.50
65	G137	C+	SC #332; nseb	\$3.00
66	G141	C+	SC #375	\$3.00
67	G165A	C+	SC #425; cc,pf	\$1.50

United States Perfins				
Lot #	Cat #	Rate	Description	Min Bid
68	G206	C+	SC #331	\$3.00
69	H16	B	SC #901	\$6.00
70	H33	C+	SC #398; pp (cmr) perf	\$1.50
71	H36	D	SC #E7; nsel, cr, sp, rare stamp w/perfin	\$5.00
72	H44	B	SC #468; perf flts	\$3.00
73	H47	C	SC #684	\$1.00
74	H77	C+	SC #467; pf	\$1.50
75	H80	C	SC #634	\$1.00
76	H85	B	SC #425; ppr, pf	\$3.00
77	H101	C+	SC #406; 1 pp	\$1.50
78	H105	C+	SC #406	\$3.00
79	H113	B	SC #331; cp, nset	\$3.00
80	H126	B	SC #406; th, tr	\$3.00
81	H144	C+	SC #375	\$3.00
82	H159	C+	SC #406	\$3.00
83	H171I	B	SC #499; clltr	\$3.00
84	H173	C	SC #807	\$1.00
85	H175.3	B+	SC #425; cc	\$6.00
86	H214.5	C+	SC #378	\$3.00
87	H219	C+	SC #406	\$3.00
88	H220	C+	SC #375	\$3.00
89	H228	C	SC #375; nser	\$1.00
90	I43.7-19	C+	SC #720	\$3.00
91	I43-7C-2	C	SC #745; ccs	\$0.50
92	I43.7C-14	B	SC #374	\$6.00
93	I43.7D-1	C	SC #638	\$1.00
94	I43.7H-2	C+	SC #1036	\$3.00
95	I69	C	SC #378	\$1.00
96	I84	C+	SC #503; nset	\$3.00
97	I98	B	SC #720; pp	\$3.00
98	I101	C+	SC #425	\$3.00
99	I108	C+	SC #405	\$3.00
100	J4	C+	SC #332	\$3.00
101	J10	C+	SC #375	\$3.00
102	J31	C+	SC #527; cc	\$1.50
103	J31	C+	SC #527	\$3.00
104	J31	C+	SC #527	\$3.00
105	J39	C+	SC #425; th	\$1.50
106	J42	C	SC #424; cp	\$0.50
107	J45	C+	SC #334	\$3.00

United States Perfins				
Lot #	Cat #	Rate	Description	Min Bid
108	J49	B	SC #501	\$6.00
109	J80	D	SC #370; sp, pps;	\$0.50
110	J82	C	SC #463; 1h	\$0.50
111	J96-3	E	SC #425	\$0.50
112	J96-15	C+	SC #405; partial 2nd strike	\$3.00
113	J112.7	B	SC #406	\$6.00
114	J113	C	SC #502; 1h	\$0.50
115	J126	B	SC #514	\$6.00
116	J133	C+	SC #424	\$3.00
117	J137	C+	SC #463; pf	\$1.50
118	J140	C+	SC #332	\$3.00
119	J141	D	SC #378	\$0.50
120	J162	B+	SC #463; pf, nser	\$6.00
121	J173.7	C+	SC #406	\$3.00
122	K3	C	SC #720	\$1.00
123	K34	C	SC #406; pf	\$0.50
124	K41	C+	SC #335; pp	\$1.50
125	K48	D	SC #377; pfs, ccs	\$0.50
126	K50	C+	SC #332	\$3.00
127	L12	C+	SC #332	\$3.00
128	L13	C+	SC #499	\$3.00
129	L13.5	B	SC #463	\$6.00
130	L28	C+	SC #375	\$3.00
131	L35	B	SC #406; partial 2nd strike	\$6.00
132	L37	C	SC #425; sc	\$0.50
133	L38	C+	SC #499	\$3.00
134	L45	C+	SC #375	\$3.00
135	L49.3	B+	SC #503	\$12.00
136	L55-2	B	SC #375; cp 3 sides	\$3.00
137	L56.5	C	SC #332	\$1.00
138	L59	C+	SC #499; tr	\$1.50
139	L119	B	SC #376; cp, pf, th, nseb	\$3.00
140	L128	D	SC #Q1; Chicago IL preper Q1-L70E	\$0.50
141	L139	C	SC #424; 1 pp	\$0.50
142	L156A	C	SC #528	\$1.00
143	L171	C+	SC #406; th	\$1.50
144	L172	B	SC #406; pfs	\$3.00
145	L185A	C+	SC #504	\$3.00

Foreign Perfins				
Lot #	Country	Cat #	Description	Min Bid
146	Canada	OC6	Used. 4 hole perfin in 6c Seaplane. Cat \$1.70	\$0.50
147	Canada	OC6	MNH. 4 hole perfin in 6c Seaplane. Cat \$6.75	\$2.50
148	Canada	OC7	MNH. 4 hole perfin in 6c Student Flyers. Cat \$6.75	\$1.50
149	Canada	OC8	Used. 4 hole perfin in 7c Student Flyers. 2 stamps, 1 INV. Cat \$1.10. Pattern ptt on inverted pattern stamp.	\$0.50
150	Canada	OC8	MNH. 4 hole perfin in 7c Student Flyers. Cat \$6.75	\$1.50
151	Canada	OC9	Used. 4 hole perfin in 7c Canada Geese. Cat \$0.85	\$0.50
152	Canada	OC9	MNH. 4 hole perfin in 7c Canada Geese. Cat \$5.25	\$1.00

Mixtures				
Lot #	Country	Count (tot./dmg.)	Description	Min Bid
153	Australia	212(71)	Mix. Duplication. Officials and private perfins. Many comms.	\$15.00
154	Belgium	73(18)	Mix. Duplication. Belgium 40(10); Netherlands 33(8)	\$7.50
155	Canada	138 (32)	Mix. Duplication. Official and private perfins.	\$10.00
156	Europe	32(12)	Mix. Duplication. Austria 12(4); Czech 3; Hungary 11(4); Romania 5(3); Poland 1(1)	\$4.00
157	Europe	27(14)	Mix. Duplication. Spain 14(8); Portugal 13(6)	\$1.50
158	France	94(39)	Mix. Duplication. Decent # of commemoratives.	\$6.00
159	Germany	56(22)	Mix. Duplication. 1 Saar.	\$4.00
160	Great Britain	277(69)	Mix. Duplication. QV-4 Kings. Damage count is an estimate.	\$12.00
161	Great Britain	577(115)	Mix. Duplication. QE2 only. Damage count is an estimate.	\$15.00
162	G. B. Regionals	32(1)	Mix. Duplication. Machins and QE2 Regional issues.	\$2.50
163	Ireland	20(5)	Mix. Duplication.	\$3.00
164	Italy	36(8)	Mix. Duplication.	\$2.50
165	Scandinavia	52(8)	Mix. Duplication. Denmark 39(3); Sweden 4(1); Switz 9(4)	\$5.00
166	South America	25(5)	Mix. Duplication. Argentina 23(5); Chile 2	\$2.00
167	U. S. A.	230	Mix. Duplication. No damaged stamps/perfins	\$7.50
168	U. S. A.	Many 100's	Mix. Hvy Duplication. Estimate 10% damage. Nothing special but lots of different face value stamps (up to \$2)	\$20.00
169	U. S. A.	56(6)	Mix. Duplication. Commemorative perfins.	\$7.50
170	U. S. A.	473(47)	Mix. Duplication. Perfins in multiples (from 2-10). Values to \$1	\$10.00
171	U. S. A.	183(183)	Mix. Duplication. All seconds (all damaged in some way)	\$1.00
172	U. S. A.	66(5)	Mix. Hvy Duplication. Airmails, Parcel Post, Special Delivery	\$6.00
173	U. S. A.	48(25)	Mix. Duplication. All precancelled perfins.	\$2.50
174	U. S. A.	360(36)	Mix. Duplication. All revenue perfins (documentaries and NY Stock Transfers)	\$10.00

Mixtures				
Lot #	Country	Count (tot./dmg.)	Description	Min Bid
175	World	21(13)	Mix. Greece 2; India 7(6); Singapore 1(1); Japan 4(1); Jamaica 3(3); Natal 1(1); Egypt 1; Sudan 2(1)	\$5.00

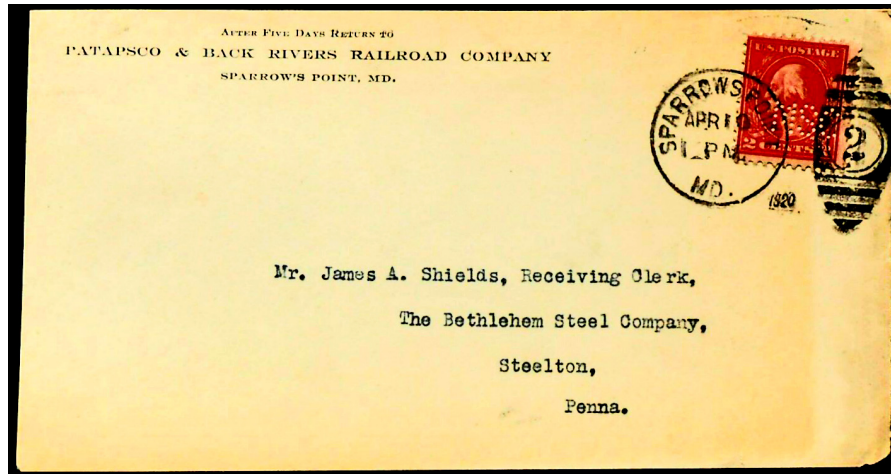
United States Covers				
Lot #	Cat #	Rate	Description	Min Bid
176	D61	E	#10 cover. Syracuse, N.Y. (Northrup Station) 17 SEP 1918. Return address of: The Delaware, Lackawanna & Western R.R. Co., United States Railroad Administration, W.G. McAdoo, Director General of Railroads, Delaware, Lackawanna & Western Railroad. Sc# 499. Cover reduced at left, no flap.	\$1.00
177	D73.7	E	#10 Cover. Duluth 2, Minn. 18 DEC 1947. Return Address of: Duluth, Missabe and Iron Range Railway Co., Accounting Dept., Duluth 2, Minnesota. Sc# 807.	\$1.00
178	D73.7	E	Cover. Eveleth, Minn. 5 FEB 1911. Return Address of: Duluth, Missabe & Northern Ry. Co., Company's Service, Eveleth, Minn. Sc# 375. Nice receiving cancel on reverse of Mankato Minn dates cover.	\$1.00
179	D91	C+	Cover. Harrisburg PA 23 JUN 1917. Return address of: Dives, Pomeroy & Stewart, Harrisburg, PA. Sc# 499	\$7.50
180	F224	C	Window Envelope. Chicago IL. 1 DEC 1908. Return Address of: Fuller & Fuller Co., 220 Randolph Street, Chicago, ILL. Sc# 319. Early perfin cover - 1st year!	\$6.00
181	F232	D	Self Addressed Reply Envelope (unused). Address of: J. C. McKown, Secretary, St. Paul Fire and Marine Insurance Company, Fifth and Washington Streets, St. Paul, Minn. Sc # 599. Cover has been folded down the middle (does not affect stamp); ptl	\$1.50
182	G129	E	#10 Cover. Mobile ALA 20 AUG 1947 (EKU on cover). Return address of: Gulf, Mobile & Ohio Railroad Co., Accounting Department, Drawer 969, Mobile 5, ALA. Sc# 907 (ptr), embossed envelope Sc# U437.	\$2.00
183	G131	E	Monarch sized illustrated cover showing a goat delivering mail wearing a mail sack and postman's cap. Des Moines IA. 6 JAN 1970. Return address of: The Great Northern Goat, 175 E. 4th Street, St. Paul, Minnesota 55101. Handstamped L. W. Nelson, Sales Manager, Great Northern Railway, 305 Equitable Bldg., Des Moines, IOWA. Cover opened roughly at bottom but still very attractive cover. Sc# 1284 (pair). New city/return address.	\$5.00
184	G132A	F	Cover. Des Moines IOWA, 4 JUN 1952. Return address of: Great Northern Railway Co. Handstamped: M. A Williams, General Agent, Great Northern Railway, the Equitable Building, Des Moines, Iowa. SC# C40.	\$1.00
185	G181	E	#10 Cover. Detroit 3, Mich. 3 SEP 1935. Return address of: Detroit Terminal Railroad Co., Detroit, Michigan. Response letter (on company stationery) enclosed speaks to the addressee (Canada) having submitted an invention for a rail joint. SC# 720 (sp). Buy U.S. Savings Bonds slogan cancel.	\$1.00

United States Covers				
Lot #	Cat #	Rate	Description	Min Bid
186	G181	E	#10 Cover. Detroit MICH 14, 20 JUN 1947. Return address of: Grand Trunk Western Railroad Company, 441 E. Jefferson Ave., Detroit, Mich. Sc# C32 with a nice VIA U.S. Air Mail hand stamp. Cancel is a Buy U.S. Bonds slogan.	\$1.00
187	HP21.7I; JP55.7 and I117	DEF	#10 Philatelic Cover. Washington NJ indistinct cancel. Philatelic Cover from Richard Mewhinney (Perfins Club President) with three different perfins (HP21.71 (only "RIS"), coil pair with JP55.7. Also has a Plate Block of I117. Sc# 844 (coil pair) and Sc# 1036 (plate block 26605).	\$1.00
188	H127	E	Front. Hudson Term. Sta. N.Y. 19 MAY 1909. Return address of: The Hanover National Bank, New York. Sc# 367.	\$0.50
189	I0.5	F	#10 Cover. Albuquerque NM 871. 19 MAY 1980. Return address of University of Illinois at Urbana-Champaign, College of Engineering, Engineering Placement Office, 109 Engineering Hall, Urbana, Illinois 61801. Sc# 1582 and Sc# 1596. Cover folded twice and I assume this was sent to an individual and mailed back to the University (hand stamped "to" address).	\$1.00
190	I2.5	E	Cover. Springfield IL 10 May 2003. Return address of Petrea, 507 East Washington, Urbana IL 61801. Could be an illegal use or from someone working at the University of Illinois. Sc# 2479 (pair).	\$0.50
191	I031	D	#10 envelope. Return address of: The Supreme Lodge Knights of Pythias, Insurance Department, Indiana Pythian Building, Indianapolis, Indiana with logo. Ratty envelope bearing SC 632. Preper Indianapolis Ind. 632 - 44.	\$0.50
192	K60	D	Cover. Emporia KANS. 20 DEC 1926. No ID but known to be: Kansas State Normal. Sc# 554 - nset and nser.	\$0.50
193	L146	D	Freight Notice Card. RMS Cancel, Chi & Carbondale RPO TR 8, 15 NOV 1911. Card advises that freight passed this point. Return address of: Daily Fast Freight Service, East and West, Chicago, Indiana & Southern R.R. Kankakee Division. Sc #374. Ancillary markings as sender was "unknown". Card redirected. Card shows train schedules.	\$3.00
194	L146	D	Cover. Chicago ILL., 16 MAR 1911. Return Address of: C.W. Hotchkiss, 511 La Salle Street Station, Chicago Illinois. Sc# 375.	\$1.00

Perfins Club membership is open to all persons interested in the collection and study of Perforated Initials and Insignia in postage stamps. Yearly dues are \$15. Delivery of *the Perfins Bulletin* by first class mail incurs a surcharge as follows, to addresses in: the U.S. - +\$7; Canada - \$ +\$15; and, other countries - +\$20. Dues may be mailed to the Secretary listed above or by PayPal to perfin@charter.net. The Club is on a July 1 to June 30 dues year. Dues are waived [not prorated] for the remainder of the fiscal year in which a new member joins the Club. Annual dues include a subscription to *The Perfins Bulletin*, mailed bulk rate printed matter. Mailing by 1st Class Mail is provided for an additional postage charge (see above). Applications are available at www.perfins.org or from the Secretary listed on page 2.

New RR Use Discovered

Item submitted by Doug Cutler (LM#126)



Recently discovered by Doug is pattern M239 (“MSC” of the Maryland Steel Company, Sparrows Point, MD) used by the **Patapsco & Back Rivers Railroad Company**, Sparrows Point, MD. Per Wikipedia, this RR was a class III

switching and terminal railroad, operating in Baltimore, owned for most of its existence by Bethlehem Steel Corp. and primarily served BSC’s Sparrow Point terminal area.

Secretary's Report

New Members:

None

Corrected Information:

LM 3724 Lawrence H. Cohen
6202 Sequoia Drive
Port Orange, FL 32127-6776

#3346 Richard Vetter
5569 Grace Rd.
Benzonia, MI. 49616-9716

LM 1060 Erik B. Nagel
PO Box 3726
Greenville, SC. 29608-3726

Resigned:

#4206 Robert Brown - new member decided not to pursue perfins
#3879 Wayne Weatherl - sold most of his collection

Dropped: Nonpayment of Dues:

#4088 Paul Robertson
#3716 John C. Root
#3898 Harold Scott
#3638 Jean Oberholtzer

#2586 Ronald Whyte
#4156 Pete Maybury
#1607 Kent Kobersteen

Current membership: 436

INVESTIGATE PRECANCELS!

Thousands of possibilities at
minimal cost!

Local and National meetings held
throughout the year

Monthly magazine

Send \$1.00
(includes postage)
for sample copy to:

**Promotional Secretary
Precancel Stamp Society**
Dick Kalmbach
2658 Ironwood Dr.
Buford, GA 30519-7070
Promoprecancels.com

The Perfins Bulletin
6500 Upper Applegate Road
Jacksonville, OR 97530-9314

Periodicals

Upcoming Events of Interest

February 12-15, 2020 - Florida Precancel Club Precancel Bourse and Perfins Exchange - Tampa Stadium Hotel, 4750 Dale Mabry Highway, Tampa FL 33614-6509. Hotel telephone (813) 877-6061. Ask for the Florida Precancel rate before January 15, 2020. The FPC annual event will feature 18 dealers' tables attracting most of the major precancel/perfin dealers. It is no longer possible to obtain a room at the Florida Precancel rate without a reservation. Our meeting space cost is not based on room nights rented at the Stadium Hotel, attendees are free to choose area hotels that meet their comfort requirements. For information on the availability of Perfins at the Show contact Jerry Hejduk at flprepers@comcast.net Just be reminded of Florida in February!

August 24-29, 2020 - PSS/ Perfin Club Convention - North Charleston, SC. North Charleston Marriott Hotel, 4770 Goier Dr., North Charleston, SC 29406. Room Rate - \$119/night plus taxes good for 3 days before and after the Convention. Free airport shuttle. More soon.

The Perfins Bulletin (ISSN 8750-1627; USPS 120-490) is published bi-monthly.
The publisher is The Perfins Club, Inc., 329 E. 1st St., Dayton, OH 45402-1705
Periodicals postage is paid at Kansas City, MO and at additional offices.

Postmaster: Please send address changes to The Perfins Club, Inc., 6500 Upper Applegate Rd., Jacksonville, OR 9530-9314